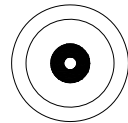
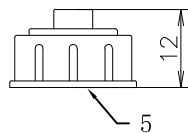
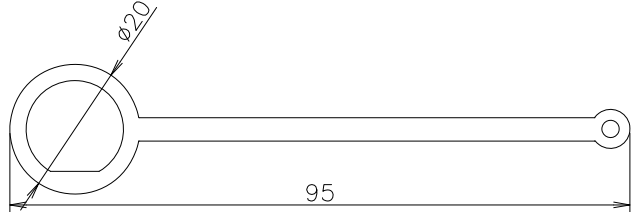
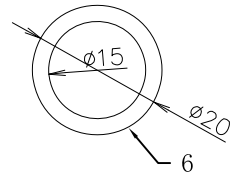
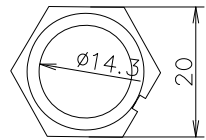
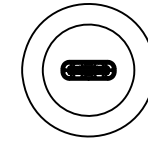
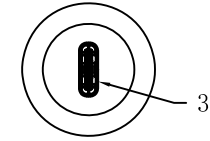
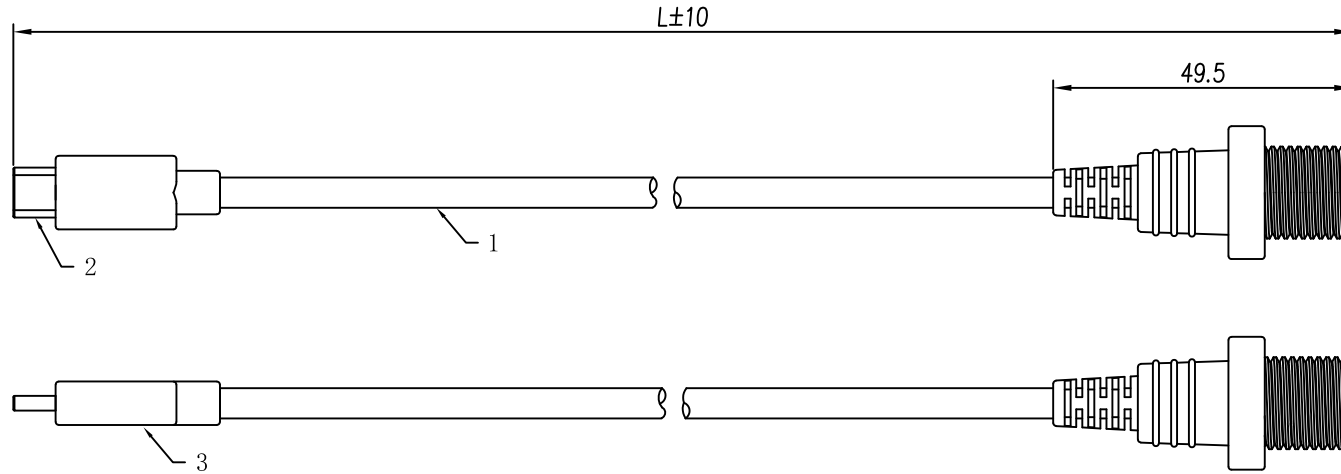


REV.	ECN NO OR DESCRIPTION	REVISED	DATE
AO	INITIAL RELEASE	KEN	24.05.31



WIRE MAP	
P1	P2
A1,B1,A12,B12+SHELL	A1,B1,A12,B12+SHELL
A4,B4,A9,B9	A4,B4,A9,B9
A2	A2
A3	A3
A5	A5
A6	A6+B6
A7	A7+B7
A8	A8
A10	A10
A11	A11
B2	B2
B3	B3
B8	B8
B10	B10
B11	B11
B5	B5

SPECIFICATION

MATERIAL:

1. Cable: (1P*30AWG+D+AL+MY)*2C+30AWG*1P+30AWG*2C+24AWG*2C)+AL+BDADB
OD:4.5mm PVC JACKET:BLACK USB3.0

2. TYPE C 3.1 MALE .CONTACT: GOLD FLASH.

3. Type c 3.1 Female ,CONTACT: GOLD FLASH.

4. PVC 45P BLACK

5. Waterproof cap and NUT

6. Waterproof ring :Rubber black

ELECTRICAL:

1. Open, Short, Miswire 100% test;

2. Contact Resistance:3 ohm MAX;

3. Insulation Resistance: 5Mega ohm MIN;

4. Hi-Pot: 300V DC/10ms.

ENVIRONMENTAL:

1. Operation temperature: -10°C~+60°C;

2. Storage temperature: -10°C~+40°C

relative humidity <80%.

UNLESS OTHERWISE SPECIFIED TOLERANCES		Coorle Technology	
DECIMALS:	ANGLES:	TITLE	Waterproof TYPE C 3.1 FEMALE-MALE
X :±0.20	X :±3°	DWN	Michael 24.05.31 PART-NO:
X.X :±0.10	X.X :±1°	CHKD	UNIT: mm
X.XX :±0.05		APVD	SHEET:1 OF 1
		ENGINEERING COPY	
		SCALE:1/1	